

SHARP

AR-M452U

Digital Multifunction System



For Dependable, All-Round
Copy/Print Performance



COPY

NETWORK PRINT
OPTION

A Solid Solution with Options to Build On

As a durable, cost-effective B/W MFP, the AR-M452U brings solid copy/network print performance, ease of use, and expandability to busy offices. Quick to warm up and fast to copy/print, the AR-M452U excels at the business-essential functions that drive productivity. With multiple security solutions and plenty of finishing options—a Saddle Stitch Finisher, Inner Finisher, 4,000-Sheet Finisher, and Punch Module—for added efficiency, the AR-M452U is a truly reliable business builder.



COPYING & OPTIONAL NETWORK PRINTING

Super-Efficient Output



The AR-M452U delivers a fast output of **45 cpm/ppm***, enabling the production of large-volume documents that include memory-intensive graphics in less time. The first copy comes out in just **3.9 seconds** to save valuable time when performing multiple short-run jobs. What's more, the short, straight paper path minimises misfeeds, saving you paper and toner costs.



* A4 (8 1/2" x 11"), long-edge feeding

Productive Collated Output from Memory



The AR-M452U's Scan Once/Print Many function only requires a single scan of a multi-page original for copying, and the RIP Once/Print Many function only needs to download print data once from the PC for printing. The machine then automatically saves the data into memory and outputs **collated** sets of copies or printouts in the proper page order (electronic sorting), with each set **offset stacked** for easier retrieval.



Multi-page original is scanned... stored in memory in proper page order... and stacked offset (or print data sent from PC)

Built-in Stackless Duplex Module



The AR-M452U can make **two-sided copies and printouts** using its built-in stackless duplex module, effectively reducing paper costs as well as saving filing space. Duplex copying is even more effective when used together with the optional **100-sheet RSPF** (reversing single pass feeder), which efficiently feeds in either one- or two-sided originals.

Job Build for Large-Volume Scanning



The AR-M452U easily handles copy jobs exceeding the RSPF's 100-sheet* capacity. For example, a 270-sheet original can be scanned as batches of 100 + 100 + 70 sheets and automatically stored in memory. Users can then print the entire document in a single run.

* A4 (8 1/2" x 11"), 80 g/m²

Other Key Features

- Network tandem function doubles output to 90 cpm/ppm
- PDF/TIFF/JPEG direct printing*
- Digital auto exposure control

* PDF direct printing requires optional MX-PKX1.

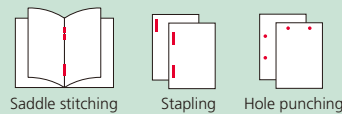
Polished Finishing



The AR-M452U makes it easy to create professional-looking booklets. The **Saddle Stitch Finisher** option staples documents up to 50 sheets and can fold and staple sets of documents up to 15 sheets to make completed booklets. It also features a new **bi-folding** function that folds individual pages, up to size A3, in half—eliminating the tedious task of folding pages by hand. A space-efficient **Finisher** is also available for jobs that require only simple sorting and stapling, while another option, a **4,000-sheet Finisher**, speeds through large projects to give you complete control over deadlines. And, an optional **Punch Module** allows you to punch holes in documents for easy filing.



A Variety of Job Finishing Options



Large Paper Capacity



For high-volume work, the AR-M452U can accommodate an optional 3,500-sheet large-capacity tray and stand with 2 x 500-sheet paper drawers for a total capacity of **5,600 sheets**. The **Auto Tray Switching** function automatically switches to another paper tray filled with the same size paper, allowing you to do extra-large volume jobs.

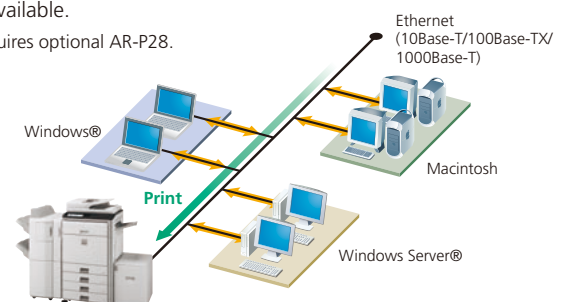


Powerful Network Printing*



- The AR-M452U works as a network printer with the latest and most commonly used operating systems and network protocols, including **IPv6**, and even in mixed OS environments. You get fast, powerful network printing via the 1000Base-T **Gigabit Ethernet** standard.
- The AR-M452U supports **PCL5e** and **PCL6** printer languages. For compatibility with **PostScript 3**, the MX-PKX1 PS3 Expansion Kit is available.

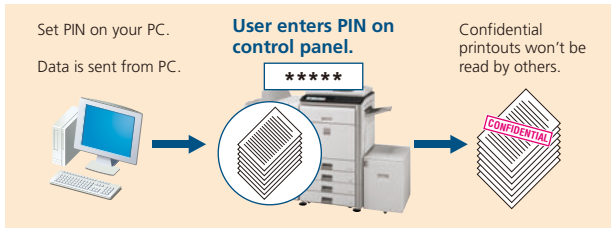
* Requires optional AR-P28.



SECURITY

Print Hold and Confidential Print

To keep others from seeing confidential documents as they are being printed out, the AR-M452U's Print Hold function stores print data and withholds output until the user executes a print command from the control panel. For added security, the Confidential Print function requires the user to enter in a PIN (personal identification number) at the machine before printing can begin.



Secure Sockets Layer

SSL (secure sockets layer) enables the encryption of data communications to prevent data leakage through the network when printing via IPP, browsing secure Web pages (HTTPS), or communicating via e-mail (SMTP and POP3) or FTP (FTPS).

Secure Network Access

The AR-M452U's **IP/MAC address filtering** function provides highly secure operation by restricting access to the AR-M452U on your office network. Only PCs that have either their IP address or MAC (media access control) address registered are allowed to use the AR-M452U. Attempted access from an unknown IP or MAC address will be denied, preventing unauthorised use. The AR-M452U also supports the **IEEE 802.1X** standard for port-based network access control, which blocks all access from unauthorised devices.

User Authentication

The AR-M452U prevents unauthorised use by requiring **user ID numbers** for machine access. This safeguarded solution can register up to 200 users in **three access levels** as Administrator, User, or Guest and can designate to which function user authentication applies. The AR-M452U can, for example, be set to allow copying by all users while restricting printing to designated users.

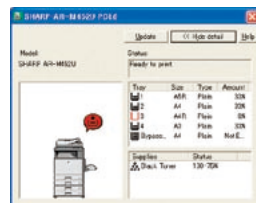


User authentication

USER- & ENVIRONMENT-FRIENDLY

Printer Status Monitor

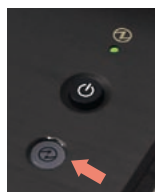
If the AR-M452U is low on paper or toner, the **Printer Status Monitor** will alert you in the form of easy-to-understand graphics, allowing you to avoid problems before they arise.



Printer Status Monitor

Environmentally Conscious Design

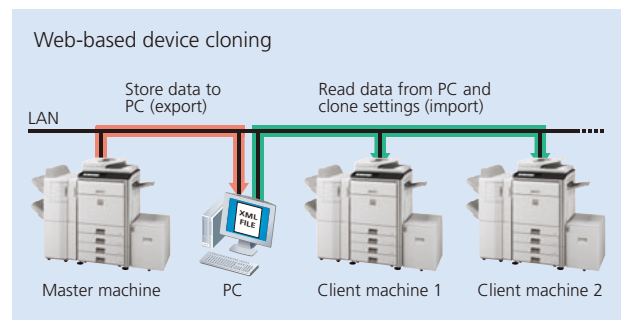
- In **support of the RoHS directive**, which restricts the use of hazardous substances, Sharp has fully eliminated harmful lead and chromium in all AR-M452U parts and materials.
- The AR-M452U has two levels of **energy-saving modes** to reduce or shut off electricity after a period of inactivity. And pressing the **manual energy save key** after a job is finished immediately puts the AR-M452U into pre-heat mode for further cutbacks on running costs.



Energy save key

Device Cloning

Machine settings can be copied conveniently to another AR-M452U via a Web browser in XML format, making it easy to clone machines in a networked environment. With Device Cloning, the administrator no longer needs to set up individual machines one by one, thereby making his/her job a lot easier.



8.1-Inch Touch-Screen LCD

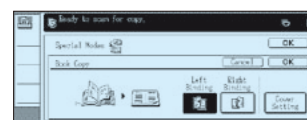
The AR-M452U's logically designed control panel features a wide, clear, touch-screen LCD with easy-to-follow guidance. For example, when adjusting staple/sort finishing or making pamphlets, the LCD displays step-by-step instructions to guide you through the necessary procedures.



Control panel



Staple/sort finishing



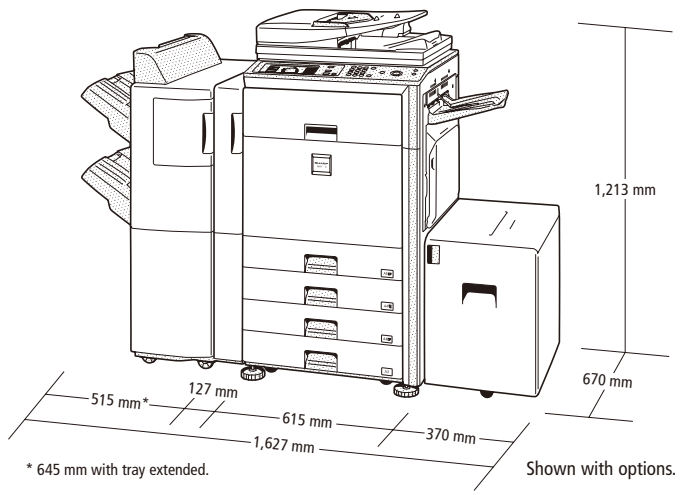
Book copy

SPECIFICATIONS (tentative)

General	
Type	Desktop
Engine speed	Max. 45 cpm/ppm (A4, 8 1/2" x 11", long-edge feeding)
Paper size	Max. A3W (12" x 18"), min. A5R (5 1/2" x 8 1/2"R)
Paper capacity (80 g/m ²)	Standard: 1,100 sheets (two 500-sheet trays and 100-sheet multi-bypass tray) Maximum: 5,600 sheets
Paper weight	Tray: 60 g/m ² to 209 g/m ² (16 lbs bond to 110 lbs index) Large-capacity tray: 60 g/m ² to 105 g/m ² (16 to 28 lbs bond) Multi-bypass tray: 56 g/m ² to 209 g/m ² (15 lbs bond to 110 lbs index)
Warm-up time*1	Less than 20 sec.
Memory	Copier memory: 320MB Printer memory: Standard 1GB, max. 2GB
Power requirements	Rated local AC voltage ±10%, 50/60 Hz
Power consumption (max.)	1.84 kW (220 to 240V), 1.44 kW (100 to 127V)
Dimensions (W x D x H)	645 x 670 x 953 mm (25 25/64" x 26 3/8" x 37 33/64")
Weight (approx.)	95 kg (209 lbs)
Features	Card shot, edge/centre erase, job build, user authentication (200 accounts), toner save mode, pre-heat/auto power shut-off modes

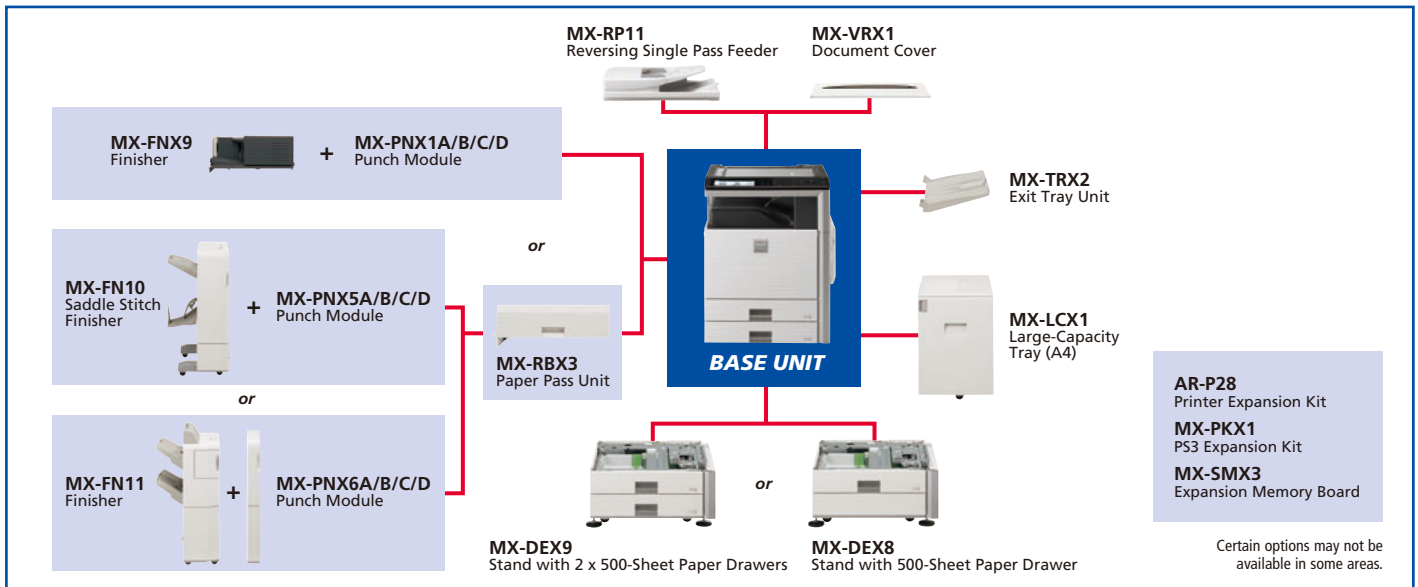
Network Printer (optional AR-P28 required)	
Resolution	600 x 600 dpi
Interface	USB 2.0 10Base-T/100Base-TX/1000Base-T
Supported OS*3	Windows Server® 2003/2008, Windows® 2000/XP, Windows Vista®, Windows 7, Mac OS 9.0 to 9.2.2, Mac OS X 10.2.8, 10.3.9, 10.4.11, 10.5 to 10.5.8, 10.6 to 10.6.2
Network protocols*3	TCP/IP (IPv4, IPv6), IPX/SPX (NetWare), NetBEUI, EtherTalk (AppleTalk)
Printing protocols	LPR, Raw TCP (port 9100), POP3 (e-mail printing), HTTP, Novell Printserver application with NDS and Bindery, EtherTalk printing, IPP
PDL (emulation)	PCL 6/5e emulation, PS3 emulation*3
Available fonts	80 fonts for PCL, 136 fonts for PS3 emulation
Features*4*5	Network tandem print, RIP Once/Print Many, job retention (print hold, proof print, confidential print), direct PDF/TIFF/JPEG printing, carbon copy print, duplex print, offset output, status monitor, pamphlet style, IP/MAC address filtering, port/protocol management, binding edge, N-up (2/4/6/8/9/16), paper/output tray selection, cover/transparency insertion, fit to page, watermarks, auto configuration, tab print, secure network communications (SSL and IPsec [LPD])

Copier	
Original paper size	Max. A3 (11" x 17")
First copy time*2	3.9 sec.
Continuous copy	Max. 999 copies
Resolution	Scan: 600 x 600 dpi, 600 x 400 dpi, 600 x 300 dpi Print: 600 x 600 dpi
Gradation	Scan: 256 levels Print: 2 levels
Zoom range	25 to 400% (25 to 200% using RSPF) in 1% increments
Preset copy ratios	Metric: 10 ratios (5R/5E), inch: 8 ratios (4R/4E)
Features	Auto paper selection (mixed/random size feeding), auto magnification selection, paper type selection, auto tray switching, rotation copy, electronic sorting, network tandem copy, book copy, margin shift, dual page copy, multi-shot (4-in-1, 2-in-1), cover/transparency/tab page insertion, 2-sided copy orientation change, XY zoom, B/W reverse, mirror image, duplex copy, job reservation, job programme, photo repeat, irregular original/paper size input, stamps (date, page number, text, stamp), multi-page enlargement, tab copy, centering, sharpness



* 1 : At rated voltage, 23°C (73.4°F). May vary depending on operating conditions and environment.
 * 2 : Long-edge feeding of A4 (8 1/2" x 11") sheets from 1st paper tray, using document glass, in Auto Exposure mode, MFP in fully ready condition.
 * 3 : Optional MX-PKX1 required for Mac OS, EtherTalk, and PS.
 * 4 : Some features are not available according to the printer driver used.
 * 5 : Some features require additional option(s).
 • Design and specifications are subject to change without prior notice.
 • Windows, Windows Server, and Windows Vista are registered trademarks of Microsoft Corporation in the United States and/or other countries. All other brand names and product names may be trademarks or registered trademarks of their respective owners.

System Configuration



Distributed by:

